

THE PIPELINE

JCW

A NEWSLETTER FOR AND ABOUT THE EMPLOYEES OF JOHNSON COUNTY WASTEWATER



Volume 6, Issue 1

January 2011

Protecting our environment ♦ Serving our customers ♦ Enhancing our communities

Seeking bookmark designs showing family experiences

Get your creative juices flowing for the Johnson County Library's 2011 Bookmark Design Contest!

The popular annual contest is part of the library's celebration of the 2011 National Library Week.

The contest has categories for preschool through adult. All ages are encouraged to participate.

Entry forms for the contest, co-sponsored by the Johnson County Library and the Friends of the Library, are available at the Johnson County Central Resource Library, all 12 neighborhood library locations and at www.jocolibrary.org/bookmarks.

Entries must be returned to any Johnson County Library location by Feb. 28.

Ten winners will be selected and honored at a special event during National Library Week, April 10-16. Each will be awarded a cash prize from the Friends of the Johnson County Library.

The winning designs will be printed on bookmarks that will be distributed at all Johnson County Library locations.

More information is available by calling 826-4600.

Jimmie Hunsucker is 4th quarter STARS recipient



Beth Brandel (left) nominated Jimmie Hunsucker for the 4th quarter 2010 STARS Award. He was presented the award by Supervisor Jennifer Harder at a Sunset Office staff meeting. Jimmie was nominated for a creative approach to paying some hefty fees which stressed the operating budget.

Jimmie Hunsucker, engineer specialist, learned he is the 2010 4th quarter STARS recipient during a staff meeting Wednesday morning.

Beth Brandel, director of Business Operations and Planning, nominated him for suggesting that JCW explore the option of paying the Mission City storm water fees similar to how JCW pays KCMO charges. The Mission City fees tripled from 2009, causing a very significant impact to JCW's operating budget.

Please turn to Page 5

I/I study to yield valuable info for future work

By Dan Ott

collections systems engineer

The JCW sanitary sewer system performance within the Turkey Creek, Mission Main, and Leawood Watersheds is impacted by the magnitude of wet weather flows that enter the sewer system. The wet weather flows are due to system defects and illicit connections that result in high rates of rainwater and groundwater entering the sewer system. This is called infiltration and inflow, or I/I.

In 2009, JCW completed the inspection and study phase of a Pilot I/I project in selected basins within the Mission Main and Turkey Creek watersheds (Nelson Complex service areas) and the Leawood service area. JCW is currently proceeding with an innovative design and construction phase of this pilot project which is needed to fill a critical gap in the data that exists relative to the system improvements necessary to adequately manage I/I, while meeting both customer service goals and regulatory requirements.

The design and construction phase will only be completed in the Nelson Complex pilot basins in Mission Main and Turkey Creek. JCW will use the results of what is learned from these two areas and apply a cost effective strategy for I/I removal and sewer rehab to the entire Nelson Complex and Leawood service areas following the completion of the construction phase and post construction analysis scheduled to be completed by the end of 2013.

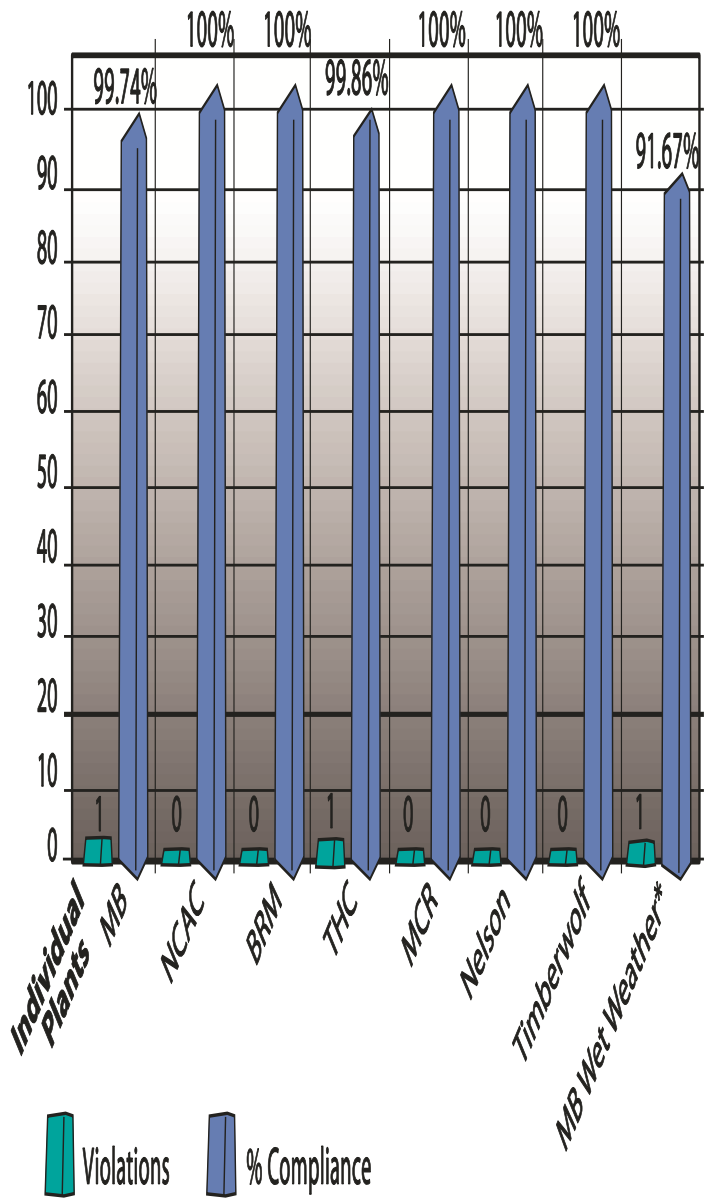
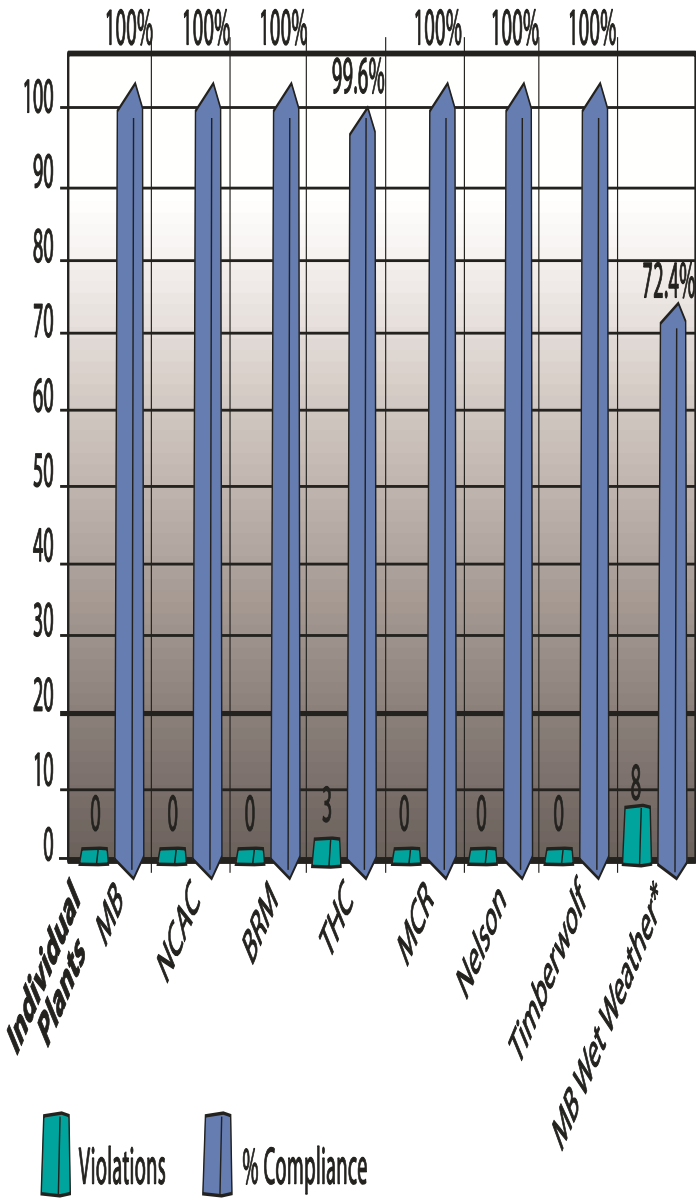
Please turn to Page 7

Levels of Service ...

Marked improvement in NPDES Permit Compliance

2009 NPDES Permit Compliance

2010 NPDES Permit Compliance



*MB wet weather facility is under a consent order and is being upgraded to meet stricter NPDES limits.

*MB wet weather facility is under a consent order and is being upgraded to meet stricter NPDES limits.

THE **PIPELINE**

A NEWSLETTER FOR AND ABOUT THE EMPLOYEES OF JOHNSON COUNTY WASTEWATER

The Pipeline is a monthly newsletter published by the JCW director of communications for and about the department's employees.

All questions, comments and submissions should be directed to **Lori Sand** at 913-715-8572 or lori.sand@jcw.org.

Submissions must not be more than 500 words.

JCW has launched its pilot Succession Planning Program with an inaugural class of 17 employees. The program was created by the department's Succession Planning Cross-Functional Team.



The purpose is to provide existing staff members with insight into careers within the Operations and Maintenance Division. In an effort to meet future anticipated shortfalls in the positions of superintendent, assistant superintendent and assistant director, the goal is to prepare interested staff with the tools necessary to shorten the learning curve should they step into those roles.

The O&M Division was chosen for the pilot since it has the most immediate and critical need for such a program, but the team's intent is to expand this program in the future.

Congratulations to the following staff members in the program: **Joe Barnes, Patrick Beane, Steve Drabant, Robert Fischer, Patrick Gardner, Joe Greer, Sam Kingsolver, Charles McAllister, Clint McCammon, James McKay, Jason Reaka, Bill Rose, Jerry Wallander, Tim Whorton, Clarence Williams, Joe Williams, and Troy Young.**

.....

Congratulations to **Timothy Whorton**, Nelson Treatment Complex, who has completed a Bachelors of Science degree from Park University in management.



Tim has been employed with Johnson County Wastewater for 16 years; 11 years at the Airport and five years at Nelson.

Throughout his course of study Tim received tuition assistance in the amount of \$6,000 from Johnson County TFM (Benefits).

"The assistance I received from Johnson County Government helped me keep my tuition costs down, which was sincerely appreciated," Tim said.

.....

JCW's own **Dan Ott**, collection systems engineer, is the subject of the KWEA Spotlight column in the organization's quarterly publication, *Splashings*, Fall 2010. The spotlight feature is "Getting to Know the People That Make This Organization Successful." The article is available online at <http://www.kwea.net/Splashings/>

Congratulations, Dan!



Meet Peggy Hiatt

Engineering Technician
5 years with JCW and 26.5 years with the county



- ★ I've been married for 41 years to the same person!
- ★ My husband, Paul, and I have two happily married sons and one granddaughter.
- ★ I'm a High School dropout but I worked hard for a GED.
- ★ The most enjoyable job I have is being a mom and grandmother. Nothing tops that. But the most enjoyable place to work has been JCW and that is because of the individuals who have made my experience here worthwhile.
- ★ I enjoy gardening, fishing, photography, and gambling.
- ★ If I wasn't working I would have to be rich. So if I wasn't with JCW, I would be traveling and seeing the sights.
- ★ Something funny: The holidays always bring new experiences to my house. One year I moved a large pan of homemade noodles off the stove and placed them near the turkey waiting to be carved. Let me tell you noodles can splatter from one end of the kitchen to the other in nothing flat! Now the noodles are transferred to the serving bowl and onto the table before another task is started!
- ★ My New Year's resolution is to stay out of poison ivy, Snow on the Mountain, Virginia creeper and anything else that may cause a rash!
- ★ My least favorite sound is chalkboard screeching....that has to be the worst noise ever.
- ★ My favorite word is money! Because with enough....you could do anything your heart desires.
- ★ I love to shoot skeet. I've showed the boys up a time or two!
- ★ It is very hard to list one accomplishment that would stand out above anything else. But pride is something that I feel every day. I'm proud of my children because they make life rich and full. And coming from very humble beginnings, I have been able to prove to myself and others that if I put my mind to it, I can accomplish just about anything.
- ★ The one item I can't live without is chocolate.

Safety Committee Report

New Business

- Reviewed goals for Safety Committee in 2011
- Discussed the role of the Safety Committee Member

Accidents in December

- December accidents will be discussed at the February Safety Committee meeting

Discussion for February Safety Committee Meeting

- Developing specific goals for 2011
- Goals will be shared with entire Johnson County Wastewater staff



JCW medallions bestowed on departing commissioners

During the recent receptions for outgoing Johnson County Commissioners, **Doug Wood** and Chairman **Annabeth Surbaugh**, **John Metzler**, chief engineer, and **John O'Neil**, general manager, represented the department in presenting a special token of appreciation.

The presentation has become quite a tradition among county staff. Specially-cast replicas of the county's manhole covers have become a coveted gift given to selected recipients.

Here, Commissioner Wood proudly models the medallion presented by John Metzler.

When Chairman Surbaugh received her gift from John O'Neil she noted that she now has a matched pair and will place her second medallion in her garden along with the first.



- Accountability of the Safety Committee members regarding goals
- Election of members
- By-laws reviewed
- Accident reviews

Next Meeting

February 9, 2011, 9 a.m. in Nelson, MM10 Bldg, Rm 101

Update on Douglas L. Smith Middle Basin's "Green" Project

By **John Metzler**, chief engineer

Most of the facilities built for this project are now in the start-up process, but normal operational levels are not expected to be reached until March 2011.

JCW has been accepting industrial Fats, Oil, and Grease (FOG) on a trial basis from the food processing industries at New Century Air Center since early December. Some restaurant FOG has also been accepted. From now through March, JCW plans to accept gradually increasing loads of this material until the facility is accepting the maximum amount these industries generate. Caution is needed during this process, as the anaerobic digesters that convert the FOG to methane gas for electricity generation are biological systems that must be acclimated to these high strength wastes. In fact, during this process, the digesters have had problems acclimating on two different occasions, and FOG loadings had to be temporarily suspended. Once the system is acclimated to the industrial FOG, restaurant FOG, which has a much lower organic strength, will be accepted.

To date, the FOG material is generating greatly increased methane. This indicates the system is functioning as intended and that savings in electricity from operating this system are likely. It is estimated that these savings could be as much as \$500,000 per year, or about half the plant electricity cost.

Future activities include:

- Start-up of Electricity Generation Engines - Mid-February
- Conduct Open House for Haulers - Early March
- Ribbon Cutting Ceremony - April

Play it smart in winter weather

According to the National Weather Service, the current long-range winter forecast for Kansas shows an even chance of below-average, average, or above-average temperatures and precipitation.

“This forecast confirms that you never know what kind of winter weather is going to impact our community”, said **Nick Crossley**, director of Johnson County Emergency Management & Homeland Security. “That’s why it is important for local citizens to be personally prepared for whatever may happen.”

The weather this past couple of weeks is a great reminder that it IS winter!



Here are some personal preparedness activities:

- Winterize your car by checking snow tires and anti-freeze levels;
- Keep an emergency kit in your vehicle with extra blankets, flashlights, batteries, necessary medications, high-energy food snacks, water, a snow shovel and a safe, alternate heating source such as chemical hand-warmers;
- Avoid letting vehicle gas tanks get below a quarter tank; and
- At home, be prepared to be without power for at least three days by assembling a home emergency kit with similar supplies.

Personal preparedness is important to do in advance of any weather event. Now is the time to identify needed supplies to minimize the last minute rush to stores when severe weather threatens.

For winter weather information and tips on keeping safe and warm this winter, go to www.jocoem.org.

Take advantage of a free training opportunity for operators

A FREE workshop entitled “Math Review, Dosage Calculations and Chemical Feed Pumps” will be offered on Feb. 17 at the Gardner City Hall by the Kansas Rural Water Association.

Operators who attend this class will receive five hours of renewal.

The deadline for registration is Feb. 11, and the class is limited to 40 registrants. Any employee wishing to attend should get prior approval from their supervisor.

Information about the workshop can be found at www.krwa.net.



Jimmie Hunsucker is 4th quarter STARS recipient

Continued from Page 1

Jimmie provided significant background research and assisted Beth to help conclude that paying 95 percent of the Mission City storm water fees from capital would be appropriate.

“This creative solution by Jimmie and his willingness to ensure it was addressed ‘saved’ approximately \$44,000 from the operating budget, which will potentially help JCW maintain its outstanding levels of service during our budget crisis,” Beth said.

She noted that Jimmie’s suggestion and actions demonstrate the core value of *Creativity* by determining a new way to approach a problem, and the core values of *Service* by allowing a significant dollar amount to be available for providing service in JCW’s operating budget.

Congratulations, Jimmie!

Did you hear the one about ...

As a bagpiper, I play many gigs. Recently, I was asked by a funeral director to play at a graveside service for a homeless man. He had no family or friends, so the service was to be at a pauper’s cemetery in the Kentucky backcountry. As I was not familiar with the backwoods, I got lost, and being a typical man, I didn’t stop for directions. I finally arrived an hour late and saw the funeral guy had evidently gone and the hearse was nowhere in sight. There were only the diggers and crew left, and they were eating lunch. I felt badly and apologized to the men for being late. I went to the side of the grave and looked down and the vault lid was already in place. I didn’t know what else to do, so I started to play. The workers put down their lunches and gathered around. I played my heart and soul out for this man with no family or friends. I played like I’ve never played before. And as I played “Amazing Grace,” the workers began to weep. They wept, I wept, we all wept together. When I finished, I packed up my bagpipes and started for my car. Though my head hung low, my heart was full. As I was opening the door to my car I heard one of the workers say, “I’ve never seen anything like that before, and I’ve been putting in septic tanks for 20 years!”

Have a funny sewer or wastewater story or joke you want to share? Send it in, but keep it clean!

LOL!

County revises procedure regarding use of county vehicles

PROCEDURE 404-2

USE OF VEHICLES FOR COUNTY BUSINESS

Revised effective January 1, 2011

OVERVIEW

This Procedure covers the County's guidelines for using vehicles for County business.

STANDARDS

Any employee who operates a County-owned or County-leased vehicle for any purpose or uses, with authority, a privately-owned vehicle for County work-related purposes must:

1. Be fully qualified to operate the specific vehicle;
2. Be 18 years of age or older unless specifically authorized by a Department/Agency Leader;
3. Possess a valid driver's license for the type of vehicle being driven;
4. Operate the vehicle only as authorized;
5. Comply with all traffic laws, rules, and regulations;
6. Exercise due care and diligence in operation of the vehicle;
7. Not permit any unauthorized person to operate or ride in the vehicle;
8. Keep or cause the vehicle to be adequately maintained and insured;
9. Not operate the vehicle when under the influence of alcohol, any controlled substance, or any prescription, or over-the-counter medication that may impair operating ability;
10. Not operate the vehicle when afflicted with any physical or mental condition or limitation that may affect the ability to operate the vehicle in a safe and prudent manner;
11. Promptly notify appropriate persons of any accident, maintenance problem, or other problem with the vehicle;
12. Wear a seatbelt; and,
13. Refrain from eating, drinking, writing, using a mobile phone, changing radio stations, or any other activity that may cause distraction or result in unsafe operation of the vehicle, while driving.
14. Not send, read or write a text message by means of an electronic wireless communications device, except as allowed by Kansas law in emergency situations.

PROCEDURES

- A. Employees must possess express authority to operate County owned or leased vehicles or privately owned vehicles on County business. Employees must provide a copy of a valid driver's license, obtain any required qualifications for operating the vehicle, and maintain their license in good standing to operate the vehicle on behalf of the County.
- B. Employees who operate County owned or leased vehicles or privately owned vehicles on County business are required to notify Department/Agency Leaders of any change in the status of their driver's license.

Please turn to Page 6

County revises procedure regarding use of county vehicles

Continued from Page 5

- C. Department/Agency Leaders, in concert with Risk Management, will annually review and check the motor vehicle records of employees who operate County vehicles and will verify that those employees have a current, valid, and appropriate driver's license.
- D. County employees will request and make arrangements through their appropriate Department/Agency Leaders for the use of County vehicles in accordance with Department/Agency Rules.

I/I study to yield valuable info for future work

Continued from Page 1

In the latter half of 2009 and early 2010, JCW's consulting teams from Ch2M Hill, HDR|Archer, Black & Veatch, and TREKK Design Group completed a series of inspections including televising of sewer lines and house service laterals, visually inspecting homes and businesses (including internal basement plumbing), manhole inspections, smoke testing, and various other inspections. The inspections took place in three selected areas suspected of having high I/I (see tables below for locations and quantities).

Based on the findings from the inspections completed during the study phase, the consulting team and JCW staff put together a rehabilitation and I/I removal plan for the design and construction phases of the project that include a variety of different rehab strategies in different sub-areas within the Turkey Creek and Mission Main pilot basins.

One of the primary goals of this project is to determine what types of I/I sources are cost effective to remove and what types of sewer system rehabilitation strategies are cost effective in the areas served by the Nelson Complex.

This goal makes this project unique from other I/I and sewer system rehabilitation projects. The flow monitoring data that JCW is collecting within the pilot areas over the next three years as construction and I&I source removal are completed will be important for accomplishing the goal of determining the types of I/I sources to remove and rehabilitation strategies JCW should use in the future. The results and findings from this project will help JCW make critical decisions regarding necessary improvements in the entire Mission Main and Turkey Creek watersheds, as well as other older JCW service areas, in order to meet JCW's permit and regulatory requirements for the Nelson WWTP.

If you want to learn more about this exciting project, visit the project web site at <http://www.jcw.org/eng-i&istudy.htm> or contact JCW's I/I project manager – **Dan Ott**.

Greetings from Sam's Club!

Johnson County is pleased to announce an exclusive Membership Offer through a new program at Sam's Club called the Partner Membership Program. Johnson County associates will receive a \$10 gift card when you renew an existing membership **or** open a new membership. The Advantage Membership includes two annual membership cards – Annual Membership is \$40, which provides one membership card for you and one for a household member over 18 years old To take advantage of this offer, go to the JCW SharePoint site for the application and mail it, along with your \$40 check. When your application and payment is received, Sam's Club will send you your \$10 gift card. This offer will expire on April 1, 2011. If you have questions, you may call 913-888-8662.

Turkey Creek

(Shawnee - Vicinity of Quivira Road from Johnson Drive to 50th Street)

780 Buildings

50, Feet of
000 Sewer

210 Manholes

Mission Main

(Prairie Village - Vicinity of Roe Avenue from 75th Street to 79th Street)

325 Buildings

20, Feet of
000 Sewer

115 Manholes

Leawood

(Lee Boulevard to State Line and 80th to 87th Street)

325 Buildings

35, Feet of
000 Sewer

170 Manholes





February Celebrations

Wastewater Anniversaries

Birthdays

<p>2/1/1973</p> <p>2/15/1980</p> <p>2/11/1985</p> <p>2/17/1986</p> <p>2/9/1987</p> <p>2/9/1987</p> <p>2/13/1989</p> <p>2/20/1990</p> <p>2/26/1990</p> <p>2/12/1990</p> <p>2/14/1994</p> <p>2/12/1996</p> <p>2/5/2001</p> <p>2/18/2002</p> <p>2/14/2005</p> <p>2/6/2006</p> <p>2/13/2006</p> <p>2/19/2007</p> <p>2/11/2008</p> <p>2/18/2008</p> <p>2/6/2008</p> <p>2/8/2010</p> <p>2/15/2010</p>	<p>38</p> <p>31</p> <p>26</p> <p>25</p> <p>24</p> <p>24</p> <p>22</p> <p>21</p> <p>21</p> <p>21</p> <p>17</p> <p>15</p> <p>10</p> <p>9</p> <p>6</p> <p>5</p> <p>5</p> <p>4</p> <p>3</p> <p>3</p> <p>3</p> <p>1</p> <p>1</p>	<p>David Noyes pumps crew leader</p> <p>Danny Kirkpatrick treatment crew member</p> <p>Clarence Williams treatment crew leader</p> <p>Kenny Kellison assistant director of treatment</p> <p>Fred Preusch assistant superintendent collections</p> <p>Lynn Wilson treatment crew member</p> <p>Mike Peppers treatment crew member</p> <p>Tony Hall IT analyst</p> <p>Timothy Engbroten treatment crew member</p> <p>Vincent Feden assistant superintendent collections</p> <p>Ryan Guerra jet-vac crew leader</p> <p>Robert Duval treatment crew member</p> <p>Jason Reaka cleaning crew leader</p> <p>Geoffrey McManis cleaning crew leader</p> <p>Arthur Famuliner cleaning/inspection crew member</p> <p>Ramona Brooks treatment crew member</p> <p>Bradley Girard cleaning/inspection crew member</p> <p>Terry McQuerry wastewater project engineer</p> <p>Robert Glover treatment crew member</p> <p>Michael Bobki treatment crew member</p> <p>3 Joseph Barnes engineering technician</p> <p>Randall Watterson treatment crew member</p> <p>Joseph Williams treatment crew member</p>
---	---	--

<p>Douglas Penner</p> <p>Ted Sanborn</p> <p>Robbie Hernandez</p> <p>David Rush</p> <p>Guy Smith</p> <p>Robert Koch</p> <p>Jonathon Kovar</p> <p>Doug Nolkemper</p> <p>Peggy Hiatt</p> <p>John Beery</p> <p>Tonya Nibarger</p> <p>Randall Watterson</p> <p>Jason Reaka</p> <p>Tony Hall</p> <p>Gregory Gay</p> <p>Kelly Krieger</p> <p>Robert Paris</p>	<p>2</p> <p>5</p> <p>6</p> <p>7</p> <p>7</p> <p>8</p> <p>8</p> <p>10</p> <p>10</p> <p>10</p> <p>12</p> <p>14</p> <p>16</p> <p>19</p> <p>19</p> <p>23</p> <p>26</p> <p>27</p>	<p>maintenance crew member</p> <p>treatment crew member</p> <p>cleaning/inspection crew member</p> <p>cleaning/inspection crew member</p> <p>TV crew leader</p> <p>LAN analyst</p> <p>treatment crew member</p> <p>operations engineer</p> <p>engineering technician</p> <p>treatment crew member</p> <p>cleaning/inspection crew member</p> <p>treatment crew member</p> <p>cleaning crew leader</p> <p>IT analyst</p> <p>maintenance crew member</p> <p>treatment crew member</p> <p>cleaning/inspection crew member</p>
---	--	--

